



Date: 05/02/12

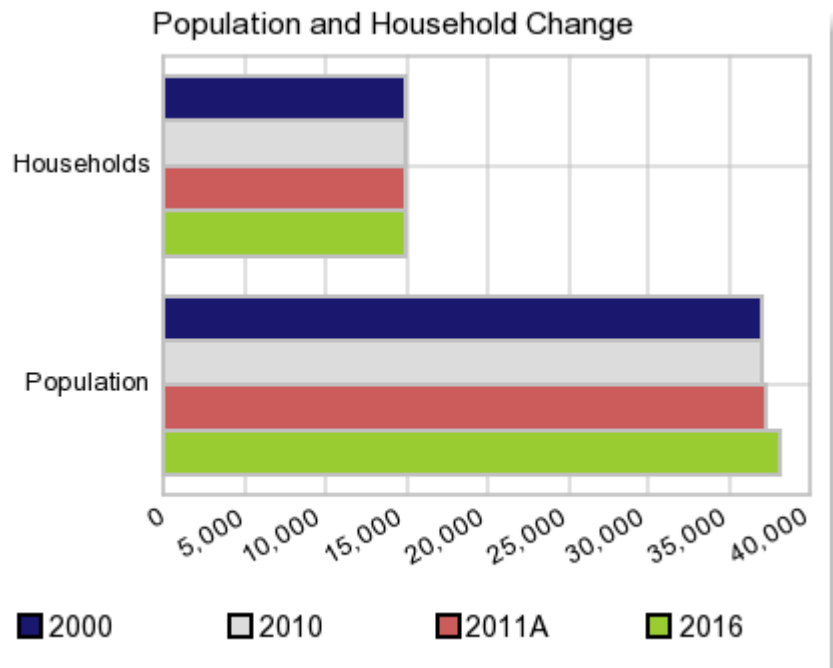
Current Geography Selection: (1 Selected) Counties: Scotts Bluff County

Executive Summary Report with Charts

Population Demographics:

The number of households in the study area in 2000 was **14,887** and changed to **14,928** in 2010, representing a change of **0.3%**. The household count in 2011A was **14,937** and the household projection for 2016 is **14,973**, a change of **0.2%**.

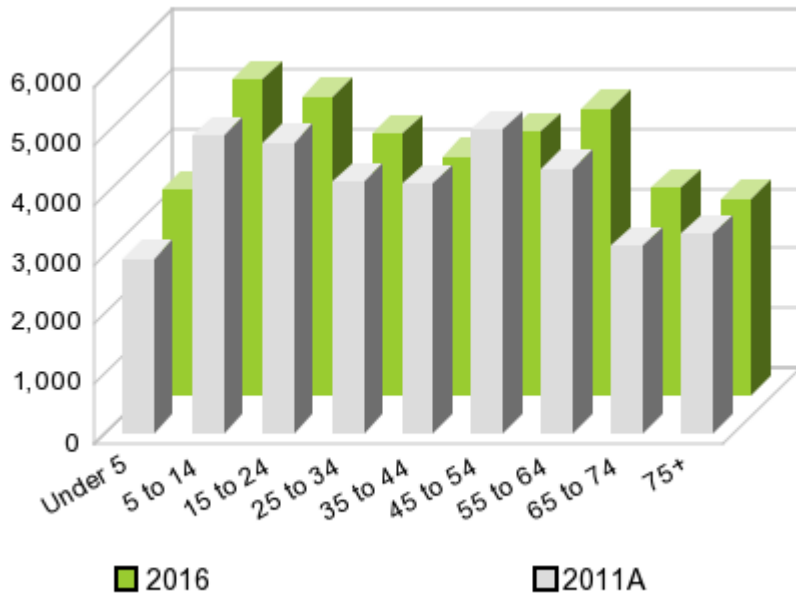
The population in the study area in 2000 was **36,951** and in 2010 it was **36,970**, roughly a **0.1%** change. The population in 2011A was **37,187** and the projection for 2016 is **38,060** representing a change of **2.3%**.



	2000 Census	2010 Census	2011A Estimate	2016 Projection	Percent Change	
					2000 to 2010	2011 to 2016
Total Population	36,951	36,970	37,187	38,060	0.1%	2.3%
Total Households	14,887	14,928	14,937	14,973	6.2%	0.2%

Population by Age

Age



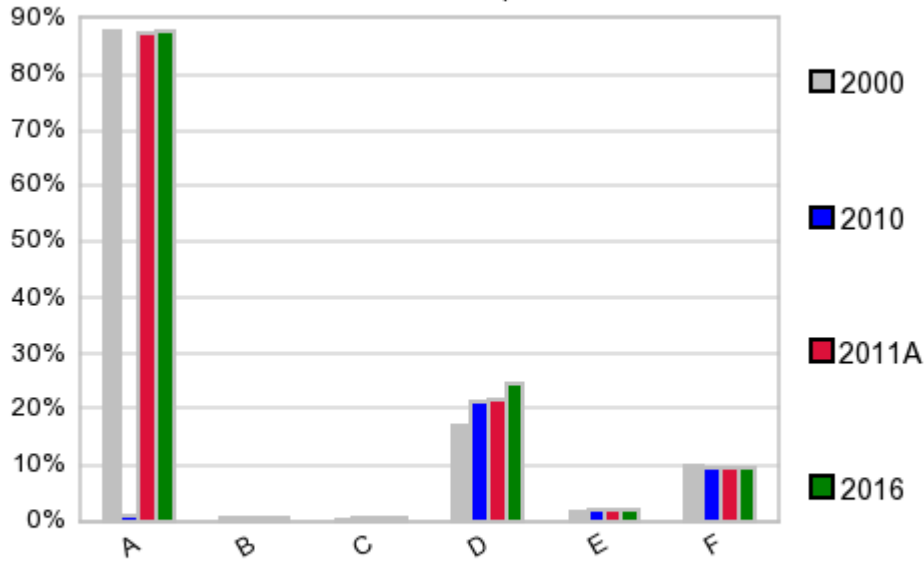
In 1990, the median age of the total population in the study area was **35**, and in 2000, it was **38**. The median age in 2011A is **39** and it is predicted to change in five years to **37** years. In 2011A, females represented **52.5%** of the population with a median age of **41** and males represented **47.5%** of the population with a median age of **37** years. In 2011A, the most prominent age group in this geography is **Age 45 to 54** years. The age group least represented in this geography is **18 to 24** years.

Age Groups*

	1990 Census		2000 Census		2011A Estimate		2016 Projection		Percent Change	
		%		%		%		%	1990 to 2000	2011 to 2016
0 to 4	2,540	7.1%	2,404	6.5%	2,933	7.9%	3,442	9.0%	-5.4%	17.4%
5 to 14	5,859	16.3%	5,417	14.7%	4,979	13.4%	5,280	13.9%	-7.5%	6.0%
15 to 19	2,664	7.4%	2,800	7.6%	2,577	6.9%	2,489	6.5%	5.1%	-3.4%
20 to 24	1,798	5.0%	2,080	5.6%	2,304	6.2%	2,508	6.6%	15.7%	8.9%
25 to 34	5,069	14.1%	4,109	11.1%	4,213	11.3%	4,385	11.5%	-18.9%	4.1%
35 to 44	5,266	14.6%	5,268	14.3%	4,168	11.2%	3,980	10.5%	0.0%	-4.5%
45 to 54	3,453	9.6%	5,105	13.8%	5,096	13.7%	4,404	11.6%	47.8%	-13.6%
55 to 64	3,561	9.9%	3,405	9.2%	4,453	12.0%	4,814	12.6%	-4.4%	8.1%
65 to 74	3,144	8.7%	3,211	8.7%	3,141	8.4%	3,481	9.1%	2.1%	10.8%
75 +	2,671	7.4%	3,152	8.5%	3,333	9.0%	3,273	8.6%	18.0%	-1.8%

Population by Race/Ethnicity

Race and Ethnicity Percent Composition



In 2011A, the predominant race/ethnicity category in this study area is **White**. The race & ethnicity category least represented in this geography is **Black**.

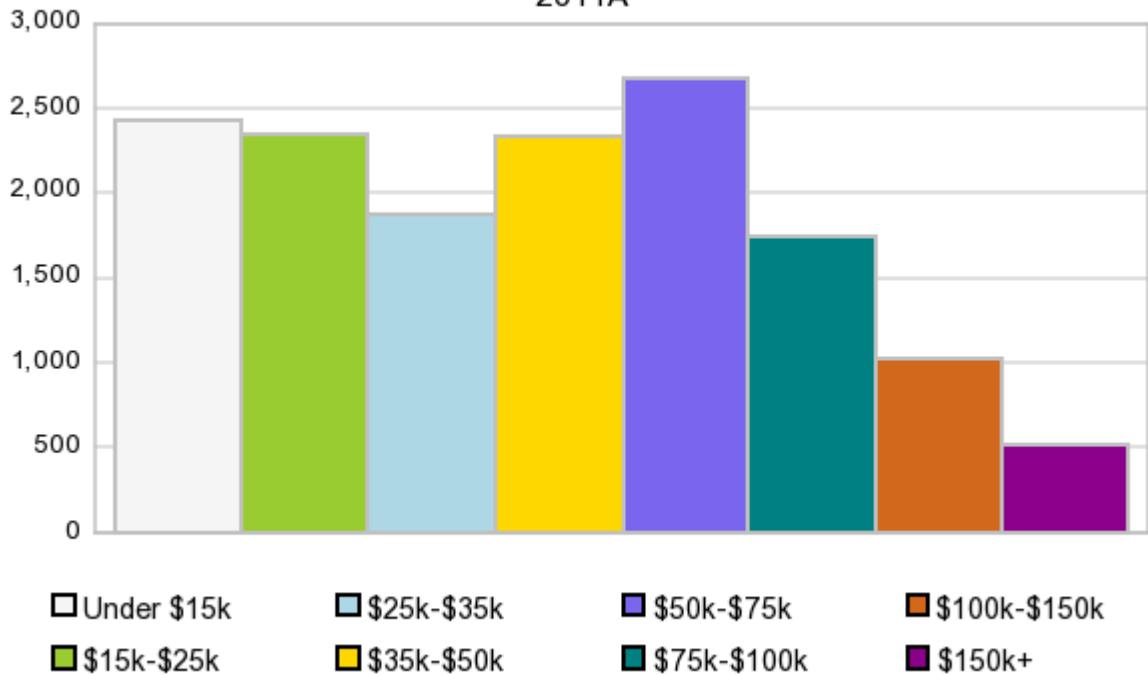
A: White
 B: Asian Pac Islr
 C: Black
 D: Hispanic
 E: Amer Indian or Alaska Native
 F: Other or Multi Race

Race & Ethnicity	2000		2010		2011A		2016		Percent Change	
	Census	%	Census	%	Estimate	%	Projection	%	2000 to 2010	2011 to 2016
White	32,363	87.6%	32,307	87.4%	32,498	87.4%	33,264	87.4%	-0.2%	2.4%
Black	98	0.3%	204	0.6%	205	0.6%	212	0.6%	108.2%	3.4%
American Indian or Alaska Native	694	1.9%	782	2.1%	793	2.1%	832	2.2%	12.7%	4.9%
Asian/Hawaiian/PI	227	0.6%	237	0.6%	237	0.6%	241	0.6%	4.4%	1.7%
Some Other Race	2,965	8.0%	2,719	7.4%	2,750	7.4%	2,793	7.3%	-8.3%	1.6%
Two or More Races	604	1.6%	721	2.0%	706	1.9%	718	1.9%	19.4%	1.7%
Hispanic Ethnicity	6,352	17.2%	7,785	21.1%	8,118	21.8%	9,441	24.8%	22.6%	16.3%
Not Hispanic or Latino	30,599	82.8%	29,185	78.9%	29,070	78.2%	28,620	75.2%	-4.6%	-1.5%

Households by Income

Households by Income Group 2011A

In 2011A the predominant household income category in this study area is **\$50K - \$75K**, and the income group that is least represented in this geography is **\$150K +**.



HH Income Categories*

	1990 Census		2000 Census		2011A Estimate		2016 Projection		Percent Change	
		%		%		%		%	1990 to 2000	2011 to 2016
\$0 - \$15,000	4,852	34.5%	2,863	19.2%	2,425	16.2%	2,252	15.0%	-41.0%	-7.1%
\$15,000 - \$24,999	3,208	22.8%	2,980	20.0%	2,351	15.7%	2,129	14.2%	-7.1%	-9.4%
\$25,000 - \$34,999	2,582	18.4%	2,217	14.9%	1,874	12.5%	1,746	11.7%	-14.1%	-6.8%
\$35,000 - \$49,999	1,914	13.6%	2,622	17.6%	2,332	15.6%	2,218	14.8%	37.0%	-4.9%
\$50,000 - \$74,999	1,013	7.2%	2,398	16.1%	2,679	17.9%	2,819	18.8%	136.7%	5.2%
\$75,000 - \$99,999	267	1.9%	921	6.2%	1,744	11.7%	2,060	13.8%	244.9%	18.1%
\$100,000 - \$149,999	112	0.8%	615	4.1%	1,022	6.8%	1,154	7.7%	449.1%	12.9%
\$150,000 +	98	0.7%	271	1.8%	513	3.4%	593	4.0%	176.5%	15.6%
Average Hhld Income	\$26,765		\$42,325		\$51,662		\$57,892		58.1%	12.1%
Median Hhld Income	\$21,261		\$32,156		\$38,977		\$42,995		51.2%	10.3%
Per Capita Income	\$10,562		\$17,052		\$21,077		\$23,146		61.4%	9.8%

*This Census 2010 data has not yet been released

Current year data is for the year **2011**, 5 year projected data is for the year **2016**. More About Our Data.
Demographic data ' 2011 by Experian/Applied Geographic Solutions.

Business List data ' 2011 by D&B^{fi}. All rights reserved. All D&B information is powered by DUNSRightTM, D&B's Quality Process.

' 2011. DDR is brought to you by Alteryx, Inc.

Alteryx, DemographicsNow.com and the Alteryx and DemographicsNow.com logos are trademarks of Alteryx, Inc. All rights reserved.

Privacy Statement | License Agreement